

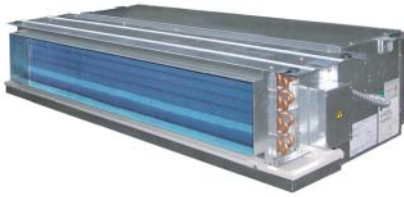


Illusion Minisplit Air Conditioners

Concealed Type 12,000-60,000 Btu/h MCD Series 50/60 Hz



Illusion Series



Trane proudly presents Illusion air conditioners with high quality design according to Trane World Wide Quality Standards providing you with convenient, comfortable, reliable, and durable heating and cooling with minimal service required.

Complete family of concealed models - available capacity ranging from 12,000 to 60,000 Btu/h for standard models and from 9,000 to 40,900 Btu/h for high efficiency models.

Energy efficiency - high efficiency models, $EER \geq 11.0$ Btu/h/W or $COP \geq 3.2$ W/W, providing full capacity with less energy consumption and electricity cost compared to standard models.

Compact height - only 258 mm for 12,000 to 6,000 Btu/h standard models - the Illusion series is very compact and easy to be installed in the tight ceiling.

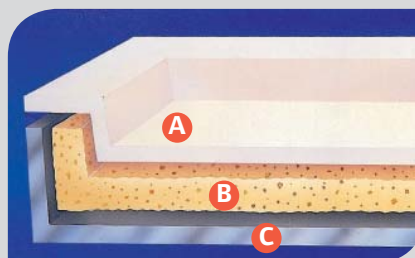
Return air plenum provides low air face velocity for quiet operation - MCD048 and MCD060 are equipped with the return air plenum and 1 inch aluminium filter as standard as well as high efficiency models from MCD030 to MCD042.



- High performance & Energy efficiency ($EER \geq 11.0$ Btu/h/W or $COP \geq 3.2$ W/W)*
- Slim design with compact height
- High quality drain pan



- A** Plastic
- B** Polystyrene foam
- C** Galvanized sheet



Triple Protection Drain Pan

Illusion drain pans consist of three layers: a single piece of galvanized sheet, a single piece of polystyrene foam, and a vacuum formed plastic liner. Moreover, it is provided with high quality drain hose, enabling flexibility, which is suitable for PVC size.

- Efficiently prevent the beautiful ceiling from droplet caused by leakage of drain pan.
- Efficient drainage and decrease the chance of the accumulation of mould with sloping drain pan.
- Provides superior indoor air quality.

High Efficiency Condensing Unit

High efficiency unit with reliable slit-type aluminium fin. Compact unit size allows for installation in limited or confined spaces.

Options: Blue fin, Copper fin, Stainless casing, 45 degree louver, and Aeris coating.



Fan Speed: continuously provides cool air flow with 4 fan speeds: High, Medium, Low, and Auto.

Temperature Setting: set temperature range is from 15 °C to 30 °C.

Powercool (Turbo) Mode: provides quick convenient cooling capacity. (Turbo Mode for LCD wired control)

Sleep Mode: provides more comfort with automatically appropriate room temperature adjustment during night time.

Econo Mode: provides more energy saving with high efficient cooling capacity.

Mode of Operation: allows you control the operating modes: Fan, Cool, Dry.

Dry Mode: provides effective humidity reduction with high efficient cooling capacity.

24 Hours Programmable Timer: Users can select on/off time of the unit as real time.



Touch Wired Control
(ACYSTAT160AA Cooling Only)
(ACYSTAT260AA Cool & Heat)



LCD Wired Control
(ACYSTAT110AA Cooling Only)
(ACYSTAT210AA Cool & Heat)



LCD Wireless Remote Control



LCD Wired Control

(ACYSTAT120AA Cooling Only)
(ACYSTAT220AA Cool & Heat)



LCD Wireless Remote Control



Touch Wired Control

(ACYSTAT170AA Cooling Only)
(ACYSTAT270AA Cool & Heat)

Digital Touch Control Series

Digital Touch Control is designed with state-of-the-art to fulfill the modern lifestyle.

- Wired and wireless control are available.
- Touch control switch.
- Providing variety of features especially when using with wireless remote control.
- Intelligent control: providing intelligent features and convenience as your desire.

Product Specification 50Hz: High Efficiency Models

Model	Indoor Unit	Outdoor Unit	MCD009AA5 TTK509PB5	MCD012AA5 TTK512LB5	MCD018AA5 TTK518LB5	MCD024AA5 TTK524LB5	MCD030EB5 TTK530KB5	MCD036EB5 TTK536KB5	MCD036EB5 TTK536KD5	MCD042EB5 TTK042KD5
Electrical Data	Power Supply	V/ph/Hz	220-240/1/50							
Performance Data	Cooling Capacity	Btu/h	10,600	13,400	18,100	25,400	31,100	36,100	36,200	40,900
	Energy Efficiency Rating (EER)	Btu/h/W	11.31	11.85	11.31	11.14	11.15	11.10	11.52	11.71
	Nominal Airflow	cfm	300	400	600	800	1,000	1,200	1,200	1,200
Indoor Unit										
Expansion Device			Capillary Tube							
Fan Motor	Type		Permanent Split Capacitor							
	RLA/LRA	A	0.49/0.71	0.49/0.71	0.86/1.26	1.71/3.19	1.71/3.19	1.56/3.01	1.56/3.01	2.29/3.15
Control Type	LCD Control Series		Option							
	Touch Control Series		Option							
Accessories	Return Air Plenum		Option							
Installed Position	Ceiling Concealed		Option							
Dimension	Height	mm	258	258	270	325	348	408	408	408
	Width	mm	946	946	1,098	1,098	1,251	1,098	1,098	1,098
	Depth	mm	456	456	482	520	672	759	759	759
Weight		kg	23	24	27	28	41	47	47	50
Piping Connection Type			Sweat Type							
Outdoor Unit										
Compressor	Type		Rotary				Scroll			
	RLA/LRA		4.1/22.0	5.0/29.0	7.1/36.0	10.7/51.0	12.9/60.0	17.2/100.0	6.4/46.0	7.2/48.0
Fan Motor	Type		Permanent Split Capacitor							
	RLA/LRA		0.43/0.62	0.54/0.93	0.88/1.79	1.03/1.79	1.03/1.79	1.03/1.79	1.03/1.79	(0.88/1.79) x 2
Dimension	Height	mm	531	585	692	795	795	795	795	1,254
	Width	mm	700	830	830	1,018	1,018	1,018	1,018	988
	Depth	mm	250	330	330	360	360	360	360	350
Weight		kg	38	43	54	70	70	71	70	85
Piping Connection Type			Flare Type							
Refrigerant Pipe Size			Sweat Type							
	Liquid	in	1/4	3/8	3/8	3/8	3/8	3/8	3/8	3/8
	Suction	in	1/2	5/8	5/8	5/8	3/4	3/4	3/4	7/8

- At ARI system rating conditons of 80°F - DB / 67°F - WB Indoor & 95°F - DB Outdoor.
- Rated for 25 feet (7.5 meters) of evacuated refrigerant piping.
- Outdoor unit's dimensions exclude the size of the mounting feet. For more detail, please see the drawing in the installation manual.

Product Specification 50Hz: Standard Models

Model	Indoor Unit	Outdoor Unit	MCD512DB TTK512PB	MCD518DB TTK518PB	MCD524DB TTK524PB	MCD530DB TTK530PB	MCD536DB TTK536KB	MCD536DB TTK536KD	MCD048DB TTK048KD	MCD048DB TTK048KD	MCD060DB TTK060KD
Electrical Data	Power Supply	V/ph/Hz	220-240/1/50								
Performance Data	Nominal Capacity	Btu/h	12,000	18,000	24,000	30,000	36,000	36,000	42,000	48,000	60,000
	Nominal Airflow	cfm	400	600	800	1,000	1,200	1,200	1,400	1,600	2,000
Indoor Unit											
Expansion Device			Capillary Tube								
Fan Motor	Type		Permanent Split Capacitor								
	RLA/LRA	A	0.48/0.80	0.82/1.86	1.37/3.15	1.98/5.28	2.20/5.77	2.20/5.77	3.33/5.08	3.33/5.08	4.30/6.98
Control Type	LCD Control Series		Option								
	Touch Control Series		Option								
Accessories	Return Air Plenum		Option								
	Electric Heater		Option								
Installed Position	Ceiling Concealed		Option								
Dimension	Height	mm	258	258	258	258	258	258	408	408	408
	Width	mm	946	946	946	1,098	1,251	1,251	1,098	1,098	1,251
	Depth	mm	494	494	531	531	531	531	759	759	759
Weight		kg	21	23	24	27	30	30	49	49	55
Outdoor Unit											
Compressor	Type		Rotary				Scroll				
	RLA/LRA		5.3 / 29.0	8.4 / 43.0	10.8 / 59.0	14.2 / 85.0	15.8 / 79.0	5.9 / 43.0	7.9 / 59.0	9.0 / 59.0	10.0 / 74.0
Fan Motor	Type		Permanent Split Capacitor								
	RLA/LRA		0.43/0.62	0.54/0.93	0.88/1.79	0.88/1.79	1.03/1.79	1.03/1.79	1.03/1.79	1.45/2.68	1.45/2.68
Dimension	Height	mm	531	692	692	692	795	795	795	795	795
	Width	mm	700	830	830	830	1,018	1,018	1,018	1,018	1,018
	Depth	mm	250	330	330	330	360	360	360	360	360
Weight		kg	41	54	60	61	79	79	87	87	92
Piping Connection Type			Flare Type								
Refrigerant Pipe Size			Sweat Type								
	Liquid	in	1/4	1/4	3/8	3/8	3/8	3/8	3/8	3/8	3/8
	Suction	in	1/2	1/2	5/8	5/8	3/4	3/4	7/8	1 1/8	1 1/8

- At ARI system rating conditons of 80°F - DB / 67°F - WB Indoor & 95°F - DB Outdoor.
- Rated for 25 feet (7.5 meters) of evacuated refrigerant piping.
- Outdoor unit's dimensions exclude the size of the mounting feet. For more detail, please see the drawing in the installation manual.

Product Specification 60Hz: Standard Models

Model	Indoor Unit	Outdoor Unit	MCD512D1 TTK512P1	MCD518D1 TTK518P1	MCD524D1 TTK524P1	MCD530D1 TTK530P1	MCD536D1 TTK536K1	MCD536D1 TTK536K4	MCD048D1 TTK042K4	MCD048D1 TTK048K4	MCD060D1 TTK060K4
Electrical Data	Power Supply	V/ph/Hz	230/1/60								
Performance Data	Nominal Capacity	Btu/h	12,000	18,000	24,000	30,000	36,000	36,000	42,000	48,000	60,000
	Nominal Airflow	cfm	400	600	800	1,000	1,200	1,200	1,400	1,600	2,000
Indoor Unit											
Expansion Device			Capillary Tube								
Fan Motor	Type		Permanent Split Capacitor								
	RLA/LRA	A	0.58/0.70	0.81/1.20	1.42/2.04	1.87/2.59	2.07/3.65	2.07/3.65	3.00/7.22	3.00/7.22	3.80/5.43
Control Type	LCD Control Series		Option								
	Touch Control Series		Option								
Accessories	Return Air Plenum		Option								
	Electric Heater		Option								
Installed Position	Ceiling Concealed		Option								
Dimension	Height	mm	258	258	258	258	258	258	408	408	408
	Width	mm	946	946	946	1,098	1,251	1,251	1,098	1,098	1,251
	Depth	mm	494	494	531	531	531	531	759	759	759
Weight		kg	21	23	24	27	30	30	49	49	55
Outdoor Unit											
Compressor	Type		Rotary				Scroll				
	RLA/LRA		5.2/29.0	8.6/50.0	10.8/58.0	15.0/73.0	18.4/95.0	5.7/39.0	7.1/46.0	7.2/48.0	8.9/65.5
Fan Motor	Type		Permanent Split Capacitor								
	RLA/LRA		0.49 / 0.56	1.25 / 1.53	1.25 / 1.53	1.25 / 1.53	1.25 / 1.53	1.25 / 1.53	1.25 / 1.53	(0.66/0.88) x 2	(0.66/0.88) x 2
Dimension	Height	mm	531	692	692	692	795	795	795	1,254	1,254
	Width	mm	700	830	830	830	1,018	1,018	1,018	988	988
	Depth	mm	250	330	330	330	360	360	360	350	350
Weight		kg	36	44	43	61	82	79	82	84	92
Piping Connection Type			Flare Type								
Refrigerant Pipe Size			Sweat Type								
	Liquid	in	1/4	1/4	3/8	3/8	3/8	3/8	3/8	3/8	3/8
	Suction	in	1/2	1/2	5/8	5/8	3/4	3/4	7/8	1 1/8	1 1/8

- At ARI system rating conditons of 80°F - DB / 67°F - WB Indoor & 95°F - DB Outdoor.
- Rated for 25 feet (7.5 meters) of evacuated refrigerant piping.
- Outdoor unit's dimensions exclude the size of the mounting feet. For more detail, please see the drawing in the installation manual.



Ingersoll Rand (NYSE:IR) is a world leader in creating and sustaining safe, comfortable and efficient environments in commercial, residential and industrial markets. Our people and our family of brands— including Club Car®, Hussmann®, Ingersoll Rand®, Schlage®, Thermo King® and Trane®—work together to enhance the quality and comfort of air in homes and buildings, transport and protect food and perishables, secure homes and commercial properties, and increase industrial productivity and efficiency. We are a \$13 billion global business committed to sustainable business practices within our company and for our customers.

Trane has a policy of continuous product and product data improvement and reserves the right to change design and specifications without notice.
Trane Thailand, 999/1 Mu 9, Bangna-Trad km. 19 Rd., Bangchalong, Bangplee, Samutprakarn, Thailand

